



View from future residential tower looking Southwest



View from a boat looking Northeast

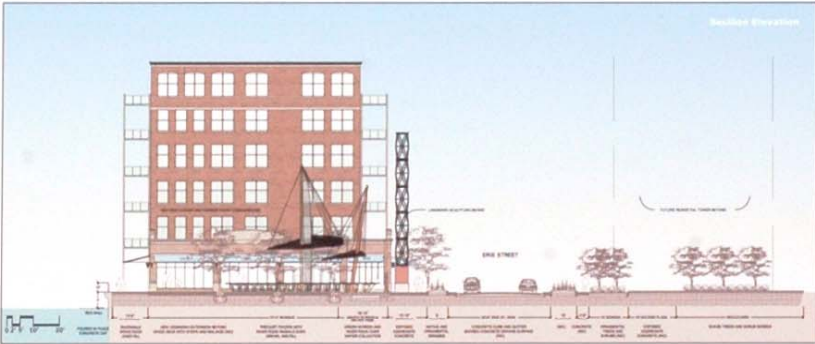
“[Create] a public space with a significant work of public art to commemorate where the Milwaukee River and the Harbor entrance meet.”

From the Third Ward Comprehensive Plan

1. Reflects the cultural and historical heritage of the community
 - Honors European craftsman who built Milwaukee
 - Engages contemporary craftsman
 - Incorporates contemporary artists
 - Adds to the industrial viewscape
 - Reflects the nautical and water-related setting
 - Recalls silos, bridges and smokestacks
 - Captures sweeping views at the water's edge
 - Recall Milwaukee's development over three centuries in design elements



View to plaza looking South on Erie



Building Elevation



View to plaza from East



Night view

